



durbin
metal industries

metals

...

fasteners

...

plastics

www.durbinmetals.co.uk

A company you can count on...

About Us

Our customers trust us to deliver the right product at the right time, on time, every time.

Our business is based on a tradition of service, aiming to be your first choice supplier of non-ferrous metals, plastics and fasteners.

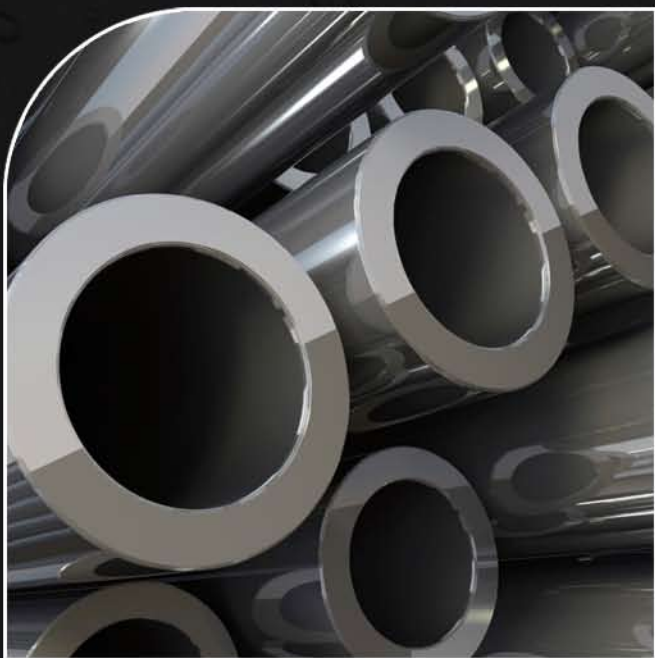
Durbin Metals combines the strengths of a large business with the friendly, flexible customer-service oriented approach of a local family business.

As a business committed to family values, we have built a focused team that puts customer needs first. This service culture is fundamental to the strength of the relationship between our staff and customers - they trust us to deliver the right product at the right time, on time, every time, supported by the right advice and service.

Our values remain as true today as they did when Durbin Metal Industries was established, embodied in a philosophy of total commitment to customer service and customer care, backed by a comprehensive stock range with a team of people who share these values.

Developing strong partnership with our customers has always been one of our guiding principles, working with them to achieve mutual profit and continued success. The continued loyalty of our customers is testimony to our ability to consistently meet that demand. But we do not take this responsibility lightly and consistently seek ways to improve our service.

We are proud of everything Durbin Metals stands for in our industry.



Our History

The business was formed by the Durbin family in 1982 and started supplying customers in the local area, gradually expanding the territory covered to span the whole of the South West and Midlands regions.

In 1997, we relocated to extensive new premises in Yate, which enabled us to invest in a truly outstanding stock range and to offer an even more impressive service at a competitive price.

In 1998 we opened the Aluminium Plate Centre, with the majority of products being available cut to size on a next day service.

Our transport fleet has grown to offer an unparalleled level of service throughout the South West and Midlands regions on a daily basis.

The latest chapter in our history and the most exciting yet is joining the Amari family of companies. With access to the UK's largest stock of Aluminium, Stainless Steel Copper, Brass, Bronze and Plastics as well as the financial strength and purchasing power of one of Europe's leading metals distributors we are now pushing forward with our next phase of business development.

Aluminium Plate Centre (see page 8)

Our Aluminium Plate Centre, located in Walsall, West Midlands holds over 200 tonnes of stock in two main grades – 6082 T6/T651 and 5083 O/H111. Full plates and cut pieces are available for next day delivery.

Three plate saws with capacity up to 4m long and 152mm thick maintain a tolerance of + or 1 0.2mm.

In addition we have a specialist saw dedicated to cutting circles and rings.

Disclaimer

The information contained herein is based on our present knowledge and experience and is given in good faith. However no liability will be accepted by the Company in respect of any action taken by any third party in reliance thereon.

As the products used herein may be used for a wide variety of purposes and as the Company has no control over their use, the Company specifically excludes all conditions and warranties expressed or implied by statute or otherwise as to dimensions, properties and/or their fitness for any particular purpose. Any advice given by the Company to any third party is given for that party's assistance only and without any liability on the part of the Company.

Any contract between the Company and a customer will be subject to the Company's Conditions of Sale. The extent of the Company's liabilities to any customer is clearly set out in these Conditions; a copy of which is available on request.

Weights

All weights shown in this publication are for guidance only. They are calculated using nominal dimensions and scientifically recognised densities. Please note that in practice, the actual weight can vary significantly from theoretical weight due to variations in manufacturing tolerances and compositions.



April 2010 - Issue 1

© Durbin Metal Industries Ltd



Plastics	4
Fasteners	5
Aluminium	6
Sheet.....	6
Stucco Sheet	7
Painted Sheet	7
Shate	7
Treadplate	7
5 Bar Treadplate	7
Plate	8
Round Bar	10
Flat Bar.....	11
Square Bar.....	11
Equal Angle.....	12
Unequal Angle	12
Channel.....	13
Tee Section	13
Round Tube	14
Scaffold Tube	14
Box Section - Rectangular.....	14
Box Section - Square	14
Mouldings.....	15
Stainless Steel	16
Plate.....	16
Sheet.....	16
Square Bar.....	18
Equal Angle.....	18
Hexagon Bar.....	18
Round Bar	19
Flat Bar - Hot Rolled	20
Flat Bar - Rolled Edge	20
Structural & Decorative Tube - Round.....	21
Structural & Decorative Tube - Square.....	22
Structural & Decorative Tube - Rectangular	23
Pipe.....	24
Butt Weld Fittings	25
Flanges.....	27
Metric Tube and Fittings.....	28
Seamless Tube	29
Hygenic Tube and Fittings	30
BSP Fittings	31
Handrail Tube and fittings.....	32
Slotted Tube System and Fittings	33
Accessories - Adhesives & Cleaners.....	33
Copper	34
Sheet.....	34
Rod	34
Flat Bar.....	35
Round Tube	35
Brass	36
Sheet.....	36
Plate	36
Tube	36
Square Bar.....	36
Equal Angle.....	36
Rod	37
Hexagon Bar.....	38
Flat Bar.....	38
Bronze	39
Rod	39

Stainless Steel



Plate

Stainless Steel Hot Rolled Plate Grades 1.4307 (304L) & 1.4404 (316L)

Size	KG/Plate
2000mm X 1000mm X 3.0mm	48
2500mm X 1250mm X 3.0mm	75
3000mm X 1500mm X 3.0mm	108
2000mm X 1000mm X 4.0mm	64
2500mm X 1250mm X 4.0mm	100
3000mm X 1500mm X 4.0mm	144
2000mm X 1000mm X 5.0mm	80
2500mm X 1250mm X 5.0mm	125
3000mm X 1500mm X 5.0mm	180
4000mm X 2000mm X 5.0mm	320
2000mm X 1000mm X 6.0mm	96
2500mm X 1250mm X 6.0mm	150
3000mm X 1500mm X 6.0mm	216
4000mm X 2000mm X 6.0mm	384
6000mm X 2000mm X 6.0mm	576
2000mm X 1000mm X 8.0mm	128
2500mm X 1250mm X 8.0mm	200
3000mm X 1500mm X 8.0mm	288
4000mm X 2000mm X 8.0mm	512
2000mm X 1000mm X 10.0mm	160
2500mm X 1250mm X 10.0mm	250
3000mm X 1500mm X 10.0mm	360
4000mm X 2000mm X 10.0mm	640
6000mm X 2000mm X 10.0mm	960
2500mm X 1250mm X 12.0mm	300
3000mm X 1500mm X 12.0mm	432
4000mm X 2000mm X 12.0mm	768
2500mm X 1250mm X 15.0mm	375
3000mm X 1500mm X 15.0mm	557
2500mm X 1250mm X 20.0mm	500
3000mm X 1500mm X 20.0mm	720

Stainless Steel Cold Rolled Plate Grades 1.4307 (304L) & 1.4404 (316L) PVC Coated 1 Side

Size	KG/Plate
4000mm X 2000mm X 4.0mm	256
4000mm X 2000mm X 5.0mm	320
4000mm X 2000mm X 6.0mm	384

Stainless Steel Hot Rolled Plate Grade 1.4003

Size	KG/Plate
2000mm X 1000mm X 3.0mm	48
2500mm X 1250mm X 3.0mm	75
3000mm X 1500mm X 3.0mm	108
2000mm X 1000mm X 4.0mm	64
2500mm X 1250mm X 4.0mm	100
3000mm X 1500mm X 4.0mm	144
2000mm X 1000mm X 5.0mm	80
2500mm X 1250mm X 5.0mm	125
2500mm X 1250mm X 6.0mm	150
3000mm X 1500mm X 6.0mm	216
2500mm X 1250mm X 8.0mm	200
3000mm X 1500mm X 8.0mm	288
2500mm X 1250mm X 10.0mm	250
3000mm X 1500mm X 10.0mm	360
2500mm X 1250mm X 12.0mm	300
3000mm X 1500mm X 12.0mm	432

Stainless Steel Cold Rolled Plate Grades 1.4307 (304L) & 1.4404 (316L)

Size	KG/Plate
2000mm X 1000mm X 4.0mm	64
2500mm X 1250mm X 4.0mm	100
3000mm X 1500mm X 4.0mm	144
2000mm X 1000mm X 5.0mm	80
2500mm X 1250mm X 5.0mm	125
3000mm X 1500mm X 5.0mm	180
2000mm X 1000mm X 6.0mm	96
2500mm X 1250mm X 6.0mm	150
3000mm X 1500mm X 6.0mm	216

Stainless Steel Treadplate BSEN 10088: Part 3 / ASTM A793 / DIN 5922 (T) Pattern 1 Grade AISI 304

Size	KG/Plate
3000mm X 1000mm X 3.0mm	78
3000mm X 1250mm X 3.0mm	98
3000mm X 1250mm X 4.5mm	143
3000mm X 1250mm X 6.0mm	180



Sheet

Stainless Steel Sheet Grade 1.4003 - Cold Rolled except where shown

Size	KG/Sheet
2500mm X 1250mm X 1.0mm	25.0
2000mm X 1000mm X 1.2mm	19.2
2500mm X 1250mm X 1.2mm	30.0
2000mm X 1000mm X 1.5mm	24.0
2500mm X 1250mm X 1.5mm	37.5
3000mm X 1500mm X 1.5mm	54.0
2000mm X 1000mm X 2.0mm	32.0
2500mm X 1250mm X 2.0mm	50.0
3000mm X 1500mm X 2.0mm	72.0
2500mm X 1250mm X 2.5mm	62.5
2000mm X 1000mm X 3.0mm (HR)	48.0
2500mm X 1250mm X 3.0mm (HR)	75.0
3000mm X 1500mm X 3.0mm (HR)	108.0

Stainless Steel Sheet Grade 1.4016 (430) - Polished 240 Grit and PVC Coated 1 Side

Size	KG/Plate
2500mm X 1250mm X 0.7mm	17.9
2000mm X 1000mm X 0.9mm	14.7
2500mm X 1250mm X 0.9mm	23.0
2000mm X 1000mm X 1.2mm	19.6
2500mm X 1250mm X 1.2mm	30.7
2000mm X 1000mm X 1.5mm	24.6
2500mm X 1250mm X 1.5mm	38.4

Stainless Steel Sheet Grade 1.4016 (430) - Bright Annealed

Size	KG/Sheet
2000mm X 1000mm X 0.5mm	8.2
2500mm X 1250mm X 0.5mm	12.8
2000mm X 1000mm X 0.7mm	11.5
2500mm X 1250mm X 0.7mm	17.9
2000mm X 1000mm X 0.9mm	14.7
2500mm X 1250mm X 0.9mm	23.0
2000mm X 1000mm X 1.0mm	16.4
2500mm X 1250mm X 1.0mm	25.6
2000mm X 1000mm X 1.2mm	19.6
2500mm X 1250mm X 1.2mm	30.7
2000mm X 1000mm X 1.5mm	24.6
2500mm X 1250mm X 1.5mm	38.4
2000mm X 1000mm X 2.0mm	32.7
2500mm X 1250mm X 2.0mm	51.2



Sheet

Stainless Steel Sheet Grade 1.4404 (316L) - Polished 240 Grit and PVC Coated 1 Side

Size	KG/Sheet
2500mm X 1250mm X 0.9mm	23.0
2500mm X 1250mm X 1.2mm	31.2
2500mm X 1250mm X 1.5mm	38.4
3000mm X 1500mm X 1.5mm	55.3
2500mm X 1250mm X 2.0mm	51.2
2500mm X 1250mm X 3.0mm	77.5

Stainless Steel Sheet Grade 1.4301 (304) - Polished 240 Grit and PVC Coated 1 Side

Size	KG/Sheet
2000mm X 1000mm X 0.7mm	11.5
2500mm X 1250mm X 0.7mm	17.9
2000mm X 1000mm X 0.9mm	14.7
2500mm X 1250mm X 0.9mm	23.0
3000mm X 1500mm X 0.9mm	33.2
2000mm X 1000mm X 1.0mm	16.4
2500mm X 1250mm X 1.0mm	25.6
2000mm X 1000mm X 1.2mm	19.6
2500mm X 1250mm X 1.2mm	30.7
3000mm X 1500mm X 1.2mm	44.2
2000mm X 1000mm X 1.5mm	24.6
2500mm X 1250mm X 1.5mm	38.4
3000mm X 1500mm X 1.5mm	55.3
2000mm X 1000mm X 2.0mm	32.7
2500mm X 1250mm X 2.0mm	51.2
3000mm X 1500mm X 2.0mm	73.7
2000mm X 1000mm X 2.5mm	40.9
2500mm X 1250mm X 2.5mm	63.9
3000mm X 1500mm X 2.5mm	92.1
2000mm X 1000mm X 3.0mm	49.6
2500mm X 1250mm X 3.0mm	77.5
3000mm X 1500mm X 3.0mm	111.6

Stainless Steel Sheet Grade 1.4301 (304) - OPTISHEEN™ Polished and PVC Coated 1 Side

Size	KG/Sheet
2000mm X 1000mm X 0.9mm	14.7
2500mm X 1250mm X 0.9mm	23.0
2000mm X 1000mm X 1.2mm	19.6
2500mm X 1250mm X 1.2mm	30.7
2000mm X 1000mm X 1.5mm	24.6
2500mm X 1250mm X 1.5mm	38.4
3000mm X 1500mm X 1.5mm	55.3
2500mm X 1250mm X 2.0mm	51.2

Stainless Steel Sheet Grade 1.4301 (304) - 2B

Size	KG/Sheet
2000mm X 1000mm X 0.5mm	8.2
2500mm X 1250mm X 0.5mm	12.8
2000mm X 1000mm X 0.7mm	11.5
2500mm X 1250mm X 0.7mm	17.9
2500mm X 1250mm X 0.8mm	20.5
2000mm X 1000mm X 0.9mm	14.7
2500mm X 1250mm X 0.9mm	23.0
3000mm X 1500mm X 0.9mm	33.2
2000mm X 1000mm X 1.0mm	16.4
2500mm X 1250mm X 1.0mm	25.6
2000mm X 1000mm X 1.2mm	19.6
2500mm X 1250mm X 1.2mm	30.7
3000mm X 1500mm X 1.2mm	44.2
2000mm X 1000mm X 1.5mm	24.6
2500mm X 1250mm X 1.5mm	38.4
3000mm X 1500mm X 1.5mm	55.3
2000mm X 1000mm X 2.0mm	32.7
2500mm X 1250mm X 2.0mm	51.2
3000mm X 1500mm X 2.0mm	73.7
4000mm X 2000mm X 2.0mm	128.0
2000mm X 1000mm X 2.5mm	40.9
2500mm X 1250mm X 2.5mm	63.9
3000mm X 1500mm X 2.5mm	92.1
2000mm X 1000mm X 3.0mm	49.6
2500mm X 1250mm X 3.0mm	77.5
3000mm X 1500mm X 3.0mm	111.6
4000mm X 2000mm X 3.0mm	192.0

Stainless Steel Sheet Grade 1.4301 (304) - 240 Grit Silicon Polished and PVC Coated 1 Side

Size	KG/Sheet
2000mm X 1000mm X 0.9mm	14.7
2500mm X 1250mm X 0.9mm	23.0
2000mm X 1000mm X 1.2mm	19.6
2500mm X 1250mm X 1.2mm	30.7
2000mm X 1000mm X 1.5mm	24.6
2500mm X 1250mm X 1.5mm	38.4
2000mm X 1000mm X 2.0mm	32.7
2500mm X 1250mm X 2.0mm	51.2

Stainless Steel Sheet Grade 1.4404 (316L) - 2B

Size	KG/Sheet
2000mm X 1000mm X 0.7mm	11.5
2500mm X 1250mm X 0.7mm	17.9
2000mm X 1000mm X 0.9mm	14.7
2500mm X 1250mm X 0.9mm	23.0
2000mm X 1000mm X 1.2mm	19.6
2500mm X 1250mm X 1.2mm	30.7
3000mm X 1500mm X 1.2mm	44.2
2000mm X 1000mm X 1.5mm	24.6
2500mm X 1250mm X 1.5mm	38.4
3000mm X 1500mm X 1.5mm	55.3
2000mm X 1000mm X 2.0mm	32.7
2500mm X 1250mm X 2.0mm	51.2
3000mm X 1500mm X 2.0mm	73.7
4000mm X 2000mm X 2.0mm	128.0
2000mm X 1000mm X 2.5mm	40.9
2500mm X 1250mm X 2.5mm	63.9
3000mm X 1500mm X 2.5mm	92.1
2000mm X 1000mm X 3.0mm	49.6
2500mm X 1250mm X 3.0mm	77.5
3000mm X 1500mm X 3.0mm	111.6
4000mm X 2000mm X 3.0mm	192.0

Stainless Steel Sheet Grade 1.4301 (304) - Bright Annealed

Size	KG/Sheet
2500mm X 1250mm X 0.5mm	12.8
2000mm X 1000mm X 0.5mm	8.2
2000mm X 1000mm X 0.6mm	9.8
2500mm X 1250mm X 0.6mm	15.3
2000mm X 1000mm X 0.7mm	11.5
2500mm X 1250mm X 0.7mm	17.9
2500mm X 1250mm X 0.8mm	20.5
2000mm X 1000mm X 0.9mm	14.7
2500mm X 1250mm X 0.9mm	23.0
2000mm X 1000mm X 1.0mm	16.4
2500mm X 1250mm X 1.0mm	25.6
2000mm X 1000mm X 1.2mm	19.6
2500mm X 1250mm X 1.2mm	30.7
2000mm X 1000mm X 1.5mm	24.6
2500mm X 1250mm X 1.5mm	38.4
2000mm X 1000mm X 2.0mm	32.7
2500mm X 1250mm X 2.0mm	51.2

Stainless Steel



Square Bar

Stainless Steel Hot Rolled Square Bar
Grade 1.4307/304L

Size	KG/Metre
12.0mm SQ	1.14
16.0mm SQ	2.02
20.0mm SQ	3.16
25.0mm SQ	4.94
30.0mm SQ	7.11
40.0mm SQ	12.64
50.0mm SQ	19.75

Stainless Steel Hot Rolled Square Bar
Grade 1.4404/316L

Size	KG/Metre
12.0mm SQ	1.15
16.0mm SQ	2.04
20.0mm SQ	3.18
25.0mm SQ	4.98
30.0mm SQ	7.16
1½" SQ	11.55
40.0mm SQ	12.74
50.0mm SQ	19.90



Equal Angle

Stainless Steel Angle Grades 1.4307 (304L)
& 1.4404 (316L)

Size	KG/Metre
20.0mm X 20.0mm X 3.0mm	0.95
25.0mm X 25.0mm X 3.0mm	1.20
25.0mm X 25.0mm X 5.0mm	1.92
25.0mm X 25.0mm X 6.0mm	2.25
30.0mm X 30.0mm X 3.0mm	1.46
30.0mm X 30.0mm X 5.0mm	2.35
30.0mm X 30.0mm X 6.0mm	2.76
40.0mm X 40.0mm X 3.0mm	1.97
40.0mm X 40.0mm X 5.0mm	3.20
40.0mm X 40.0mm X 6.0mm	3.79
50.0mm X 50.0mm X 3.0mm	2.48
50.0mm X 50.0mm X 5.0mm	4.05
50.0mm X 50.0mm X 6.0mm	4.81
50.0mm X 50.0mm X 10.0mm	7.68
60.0mm X 60.0mm X 5.0mm	4.91
60.0mm X 60.0mm X 6.0mm	5.84
60.0mm X 60.0mm X 10.0mm	9.39
70.0mm X 70.0mm X 6.0mm	6.86
70.0mm X 70.0mm X 10.0mm	11.10
75.0mm X 75.0mm X 6.0mm	7.37
75.0mm X 75.0mm X 10.0mm	11.95
80.0mm X 80.0mm X 6.0mm	7.88
80.0mm X 80.0mm X 10.0mm	12.80
100.0mm X 100.0mm X 6.0mm	9.93
100.0mm X 100.0mm X 10.0mm	16.21



Hexagon Bar

Stainless Steel Hexagon Bar Grade 1.4305
(303)

Size	KG/Metre
0.3125" A/F	0.43
0.437" A/F	0.84
0.500" A/F	1.10
0.562" A/F	1.39
0.625" A/F	1.73
0.750" A/F	2.48
0.820" A/F	2.97
0.875" A/F	3.38
0.937" A/F	3.88
1.010" A/F	4.50
1.125" A/F	5.59
1.250" A/F	6.90

Stainless Steel Hexagon Bar Grade 1.4404
(316L)

Size	KG/Metre
0.500" A/F	1.11
0.562" A/F	1.40
0.625" A/F	1.74
17.0mm A/F	1.99
0.750" A/F	2.50
0.820" A/F	2.99
0.875" A/F	3.41
0.920" A/F	3.76
1.010" A/F	4.54
1.101" A/F	5.39
1.125" A/F	5.63
1.200" A/F	6.40
1.250" A/F	6.95
1.300" A/F	7.52
1.375" A/F	8.41
1.480" A/F	9.74
1.500" A/F	10.0
1.670" A/F	12.4
1.860" A/F	15.4
2.500" A/F	27.8



Round Bar

Stainless Steel Round Bar Grade 1.4305 (303)

Size	KG/Metre
3.0mm DIA	0.06
1/8" DIA (3.175mm)	0.06
4.0mm DIA	0.10
3/16" DIA (4.762mm)	0.14
5.0mm DIA	0.16
6.0mm DIA	0.22
1/4" DIA (6.35mm)	0.25
7.0mm DIA	0.30
5/16" DIA (7.937mm)	0.39
8.0mm DIA	0.40
3/8" DIA (9.525mm)	0.56
10.0mm DIA	0.62
7/16" DIA (11.112mm)	0.77
12.0mm DIA	0.89
1/2" DIA (12.7mm)	1.00
14.0mm DIA	1.22
5/8" DIA (14.287mm)	1.27
15.0mm DIA	1.40
3/8" DIA (15.875mm)	1.56
16.0mm DIA	1.59
11/16" DIA (17.462mm)	1.89
18.0mm DIA	2.01
3/4" DIA (19.05mm)	2.25
20.0mm DIA	2.48
22.0mm DIA	3.00
7/8" DIA (22.225mm)	3.07
24.0mm DIA	3.57
25.0mm DIA	3.88
1" DIA (25.4mm)	4.00
1 1/8" DIA (28.575mm)	5.07
30.0mm DIA	5.58
1 1/4" DIA (31.75mm)	6.25
1 3/8" DIA (34.925mm)	7.57
35.0mm DIA	7.60
1 1/2" DIA (38.1mm)	9.01
40.0mm DIA	9.93
1 5/8" DIA (41.275mm)	10.6
1 3/4" DIA (44.45mm)	12.3
45.0mm DIA	12.6
1 7/8" DIA (47.625mm)	14.1
50.0mm DIA	15.5
2" DIA (50.8mm)	16.0
2 1/8" DIA (53.975mm)	18.1
2 1/4" DIA (57.15mm)	20.3
60.0mm DIA	22.3
2 3/8" DIA (60.325mm)	22.6
2 1/2" DIA (63.5mm)	25.0
2 5/8" DIA (66.67mm)	27.6
2 3/4" DIA (69.85mm)	30.3

continued...

Stainless Steel Round Bar Grade 1.4305 (303) (continued)

Size	KG/Metre
3" DIA (76.2mm)	36.0
3 1/4" DIA (82.55mm)	42.9
3 1/2" DIA (88.9mm)	49.8
3 3/4" DIA (95.25mm)	57.1
4" DIA (101.6mm)	65.0
4 1/4" DIA (107.95mm)	73.4
4 1/2" DIA (114.3mm)	82.3
5" DIA (127.0mm)	102
5 3/4" DIA (146.05mm)	134
6" DIA (152.4mm)	146
7" DIA (177.8mm)	199

Stainless Steel Round Bar Grades 1.4307 (304L) & 1.4404 (316L)

Size	KG/Metre
3.0mm DIA	0.06
1/8" DIA (3.175mm)	0.06
4.0mm DIA	0.10
3/16" DIA (4.762mm)	0.14
5.0mm DIA	0.16
6.0mm DIA	0.22
1/4" DIA (6.35mm)	0.25
5/16" DIA (7.937mm)	0.39
8.0mm DIA	0.40
3/8" DIA (9.525mm)	0.56
10.0mm DIA	0.62
7/16" DIA (11.112mm)	0.77
12.0mm DIA	0.89
1/2" DIA (12.7mm)	1.00
14.0mm DIA	1.23
5/8" DIA (14.287mm)	1.27
15.0mm DIA	1.40
3/8" DIA (15.875mm)	1.56
16.0mm DIA	1.59
11/16" DIA (17.462mm)	1.91
18.0mm DIA	2.03
3/4" DIA (19.05mm)	2.25
20.0mm DIA	2.48
7/8" DIA (22.225mm)	3.07
24.0mm DIA	3.60
25.0mm DIA	3.88
1" DIA (25.4mm)	4.00
1 1/8" DIA (28.575mm)	5.07
30.0mm DIA	5.58
1 1/4" DIA (31.75mm)	6.25
32.0mm DIA	6.40
1 3/8" DIA (34.925mm)	7.57
35.0mm DIA	7.60

continued...

Stainless Steel Round Bar Grades 1.4307 (304L) & 1.4404 (316L) (continued)

Size	KG/Metre
1 1/2" DIA (38.1mm)	9.01
40.0mm DIA	9.93
1 5/8" DIA (41.275mm)	10.6
1 3/4" DIA (44.45mm)	12.3
1 7/8" DIA (47.625mm)	14.2
45.0mm DIA	12.7
50.0mm DIA	15.5
2" DIA (50.8mm)	16.0
2 1/8" DIA (53.975mm)	18.2
2 1/4" DIA (57.15mm)	20.3
60.0mm DIA	22.3
2 3/8" DIA (60.325mm)	22.8
2 1/2" DIA (63.5mm)	25.0
2 5/8" DIA (66.67mm)	27.8
2 3/4" DIA (69.85mm)	30.3
3" DIA (76.2mm)	36.0
3 1/4" DIA (82.55mm)	42.9
3 1/2" DIA (88.9mm)	49.8
3 3/4" DIA (95.25mm)	57.1
4" DIA (101.6mm)	65.0
4 1/4" DIA (107.95mm)	73.4
4 1/2" DIA (114.3mm)	82.3
4 3/4" DIA (120.65mm)	92.4
5" DIA (127.0mm)	102
5 1/4" DIA (133.35mm)	112
5 1/2" DIA (139.7mm)	123
5 3/4" DIA (146.05mm)	134
6" DIA (152.4mm)	146
6 1/4" DIA (158.75mm)	159
6 1/2" DIA (165.1mm)	172
7" DIA (177.8mm)	199
185.0mm DIA	217
7 1/2" DIA (190.5mm)	229
8" DIA (203.2mm)	260
8 1/2" DIA (215.9mm)	294
9" DIA (228.6mm)	329
9 1/2" DIA (241.3mm)	369
10" DIA (254.0mm)	406
10 1/2" DIA (266.7mm)	451
11" DIA (279.4mm)	492
12" DIA (304.8mm)	585
340.0mm DIA	728
14" DIA (355.6mm)	802
16" DIA (406.4mm)	1040

Stainless Steel



Flat Bar - Hot Rolled

Stainless Steel Hot Rolled Flat Bar Grade 1.4307 (304L)

Size	KG/Metre
20.0mm X 10.0mm	1.58
20.0mm X 12.0mm	1.90
25.0mm X 10.0mm	1.98
25.0mm X 12.0mm	2.37
25.0mm X 15.0mm	2.96
25.0mm X 20.0mm	3.95
30.0mm X 12.0mm	2.84
30.0mm X 15.0mm	3.56
30.0mm X 25.0mm	5.93
40.0mm X 15.0mm	4.74
40.0mm X 20.0mm	6.32
40.0mm X 25.0mm	7.90
50.0mm X 15.0mm	5.93
50.0mm X 20.0mm	7.90
50.0mm X 25.0mm	9.88
60.0mm X 15.0mm	7.11
60.0mm X 20.0mm	9.48
60.0mm X 25.0mm	11.9
75.0mm X 15.0mm	8.89
75.0mm X 20.0mm	11.9
75.0mm X 25.0mm	14.8
100.0mm X 15.0mm	11.9
100.0mm X 20.0mm	15.8
100.0mm X 25.0mm	19.8

Stainless Steel Hot Rolled Flat Bar Grade 1.4404 (316L)

Size	KG/Metre
20.0mm X 10.0mm	1.59
20.0mm X 12.0mm	1.91
25.0mm X 10.0mm	1.99
25.0mm X 12.0mm	2.39
25.0mm X 15.0mm	2.99
30.0mm X 12.0mm	2.87
30.0mm X 20.0mm	4.78
30.0mm X 25.0mm	5.97
40.0mm X 15.0mm	4.78
40.0mm X 20.0mm	6.37
40.0mm X 25.0mm	7.96
50.0mm X 15.0mm	5.97
50.0mm X 20.0mm	7.96
50.0mm X 25.0mm	9.95
60.0mm X 15.0mm	7.16
60.0mm X 20.0mm	9.55
75.0mm X 20.0mm	11.94
100.0mm X 15.0mm	11.94



Flat Bar - Rolled Edge

Stainless Steel Rolled Edge Flat Bar Grades 1.4307 (304L) & 1.4404 (316L)

Size	KG/Metre
12.0mm X 3.0mm	0.28
12.0mm X 5.0mm	0.47
12.0mm X 6.0mm	0.57
20.0mm X 3.0mm	0.47
20.0mm X 5.0mm	0.79
20.0mm X 6.0mm	0.95
25.0mm X 3.0mm	0.59
25.0mm X 5.0mm	0.99
25.0mm X 6.0mm	1.19
25.0mm X 8.0mm	1.58
25.0mm X 10.0mm	1.98
30.0mm X 3.0mm	0.71
30.0mm X 5.0mm	1.19
30.0mm X 6.0mm	1.42
30.0mm X 8.0mm	1.90
30.0mm X 10.0mm	2.37
35.0mm X 6.0mm	1.66
40.0mm X 3.0mm	0.95
40.0mm X 5.0mm	1.58
40.0mm X 6.0mm	1.90
40.0mm X 8.0mm	2.53
40.0mm X 10.0mm	3.16
40.0mm X 12.0mm	3.79
45.0mm X 6.0mm	2.13
50.0mm X 3.0mm	1.19
50.0mm X 5.0mm	1.98
50.0mm X 6.0mm	2.37
50.0mm X 8.0mm	3.16
50.0mm X 10.0mm	3.95
50.0mm X 12.0mm	4.74
60.0mm X 3.0mm	1.42
60.0mm X 5.0mm	2.37
60.0mm X 6.0mm	2.84
60.0mm X 8.0mm	3.79
60.0mm X 10.0mm	4.74
60.0mm X 12.0mm	5.69
65.0mm X 6.0mm	3.08
65.0mm X 10.0mm	5.14
75.0mm X 3.0mm	1.78
75.0mm X 5.0mm	2.96
75.0mm X 6.0mm	3.56
75.0mm X 8.0mm	4.74
75.0mm X 10.0mm	5.93
75.0mm X 12.0mm	7.11
80.0mm X 6.0mm	3.79
80.0mm X 10.0mm	6.32
100.0mm X 3.0mm	2.37
100.0mm X 5.0mm	3.95
100.0mm X 6.0mm	4.74

Size	KG/Metre
100.0mm X 8.0mm	6.32
100.0mm X 10.0mm	7.90
100.0mm X 12.0mm	9.48
125.0mm X 6.0mm	5.93
125.0mm X 10.0mm	9.88
125.0mm X 12.0mm	11.85
150.0mm X 6.0mm	7.11
150.0mm X 8.0mm	9.48
150.0mm X 10.0mm	11.85
150.0mm X 12.0mm	14.33
200.0mm X 6.0mm	9.48
200.0mm X 8.0mm	12.64
200.0mm X 10.0mm	15.80

continued...



Structural & Decorative Tube - Round

Stainless Steel Welded Structural & Decorative Tube Grades 304 & 316 - Mirror Polish O/D

Size	KG/Metre
5/8" OD X 1.2mm	0.44
5/8" OD X 1.5mm	0.54
1/2" OD X 1.5mm	0.42
3/4" OD X 18SWG	0.54
3/4" OD X 1.5mm	0.65
7/8" OD X 1.2mm	0.63
7/8" OD X 1.5mm	0.77
7/8" OD X 2.0mm	1.00
19mm OD X 1.2mm	0.53
1" OD X 1.2mm	0.72
1" OD X 1.5mm	0.89
1" OD X 2.0mm	1.17
1 1/4" OD X 1.2mm	0.91
1 1/4" OD X 1.5mm	1.13
1 1/2" OD X 1.2mm	1.10
1 1/2" OD X 1.5mm	1.40
1 1/2" OD X 2.0mm	1.80
1 3/4" OD X 1.5mm	1.60
2" OD X 1.2mm	1.48
2" OD X 1.5mm	1.84
2" OD X 2.0mm	2.44
2" OD X 3.0mm	3.56
2 1/2" OD X 1.5mm	2.31
3" OD X 1.5mm	2.78

Stainless Steel Welded Structural & Decorative Tube Grades 304 & 316 - Brushed Finish O/D

Size	KG/Metre
3/4" OD X 1.5mm	0.65
1" OD X 1.5mm	0.89
1 1/2" OD X 1.5mm	1.36
1 1/2" OD X 2.0mm	1.79
1 1/2" OD X 3.0mm	2.61
2" OD X 1.5mm	1.84
2" OD X 2.0mm	2.42
2" OD X 3.0mm	3.56
3" OD X 3.0mm	5.45
4" OD X 3.0mm	7.34

Stainless Steel Welded Structural & Decorative Tube ASTM A554 Grades 304 & 316 - Satin Polish O/D

Size	KG/Metre
1 1/2" OD X 3.0mm SATIN	2.63
2" OD X 3.0mm SATIN	3.59
3" OD X 3.0mm SATIN	5.49
4" OD X 3.0mm SATIN	7.40

Stainless Steel Welded Structural & Decorative Tube Grades 304 & 316 - Dull Polish O/D

Size	KG/Metre
3/4" OD X 1.5mm	0.65
1" OD X 1.5mm	0.89
1 1/2" OD X 1.5mm	1.36
1 1/2" OD X 2.0mm	1.79
1 1/2" OD X 3.0mm	2.61
2" OD X 1.5mm	1.84
2" OD X 2.0mm	2.42
2" OD X 3.0mm	3.56
3" OD X 3.0mm	5.45
4" OD X 3.0mm	7.34

Stainless Steel Welded Structural & Decorative Tube Grade 304 - Descaled Finish

Size	KG/Metre
25mm OD X 1.5mm	0.90
25mm OD X 2.0mm	1.14

Stainless Steel



Structural & Decorative Tube - Square

Stainless Steel Welded Structural & Decorative Tube Grade 1.4301 (304) - Dull Polish O/D

Size	KG/Metre
12.7mm X 12.7mm X 1.2mm	0.45
12.7mm X 12.7mm X 1.5mm	0.55
15mm X 15mm X 1.2mm	0.53
15mm X 15mm X 1.5mm	0.66
20mm X 20mm X 1.2mm	0.72
20mm X 20mm X 1.5mm	0.88
20mm X 20mm X 2.0mm	1.19
25mm X 25mm X 1.2mm	0.93
25mm X 25mm X 1.5mm	1.15
25mm X 25mm X 2.0mm	1.50
25mm X 25mm X 3.0mm	2.21
30mm X 30mm X 1.2mm	1.11
30mm X 30mm X 1.5mm	1.37
30mm X 30mm X 2.0mm	1.84
30mm X 30mm X 3.0mm	2.72
40mm X 40mm X 1.2mm	1.50
40mm X 40mm X 1.5mm	1.86
40mm X 40mm X 2.0mm	2.45
40mm X 40mm X 3.0mm	3.76
50mm X 50mm X 1.5mm	2.33
50mm X 50mm X 2.0mm	3.08
50mm X 50mm X 3.0mm	4.65
60mm X 60mm X 2.0mm	3.71
60mm X 60mm X 3.0mm	5.49
70mm X 70mm X 3.0mm	6.53
80mm X 80mm X 2.0mm	4.99
80mm X 80mm X 3.0mm	7.53
100mm X 100mm X 2.0mm	6.40
100mm X 100mm X 3.0mm	9.53

Stainless Steel Welded Structural & Decorative Tube Grade 1.4301 (304) - Brushed Finish O/D

Size	KG/Metre
150mm X 150mm X 4.0mm	18.62
150mm X 150mm X 5.0mm	22.40
150mm X 150mm X 6.0mm	27.36
150mm X 150mm X 8.0mm	34.30
150mm X 150mm X 10.0mm	41.65
200mm X 200mm X 3.0mm	18.62
200mm X 200mm X 5.0mm	30.40
200mm X 200mm X 6.0mm	36.09
200mm X 200mm X 8.0mm	47.10
200mm X 200mm X 10.0mm	57.60

Stainless Steel Welded Structural & Decorative Tube Grade 1.4301 (304) - Descaled Finish

Size	KG/Metre
12.7mm X 12.7mm X 1.2mm	0.45
12.7mm X 12.7mm X 1.5mm	0.55
40mm X 40mm X 4.0mm	4.81
50mm X 50mm X 4.0mm	5.96
50mm X 50mm X 5.0mm	7.41
60mm X 60mm X 4.0mm	7.22
60mm X 60mm X 5.0mm	8.90
80mm X 80mm X 4.0mm	9.82
80mm X 80mm X 5.0mm	12.40
100mm X 100mm X 4.0mm	12.40
100mm X 100mm X 5.0mm	15.38
100mm X 100mm X 6.0mm	17.50
100mm X 100mm X 8.0mm	23.26
120mm X 120mm X 3.0mm	11.80
120mm X 120mm X 4.0mm	15.00
120mm X 120mm X 5.0mm	18.66
120mm X 120mm X 6.0mm	21.20
150mm X 150mm X 3.0mm	14.06

Stainless Steel Welded Structural & Decorative Tube Grade 1.4404 (316) - Descaled Finish

Size	KG/Metre
80mm X 80mm X 4.0mm	9.82
100mm X 100mm X 4.0mm	12.40
100mm X 100mm X 5.0mm	15.38
100mm X 100mm X 6.0mm	17.50
100mm X 100mm X 8.0mm	21.60
120mm X 120mm X 4.0mm	14.77
120mm X 120mm X 5.0mm	18.66
120mm X 120mm X 6.0mm	21.20
150mm X 150mm X 4.0mm	18.60
150mm X 150mm X 5.0mm	23.08
150mm X 150mm X 6.0mm	27.51

Stainless Steel Welded Structural & Decorative Tube Grade 1.4016 (316) - Dull Polish O/D

Size	KG/Metre
20mm X 20mm X 1.5mm	0.88
25mm X 25mm X 1.5mm	1.15
25mm X 25mm X 2.0mm	1.50
30mm X 30mm X 1.5mm	1.37
30mm X 30mm X 2.0mm	1.84
30mm X 30mm X 3.0mm	2.72
40mm X 40mm X 1.5mm	1.86
40mm X 40mm X 2.0mm	2.45
40mm X 40mm X 3.0mm	3.76
50mm X 50mm X 1.5mm	2.33
50mm X 50mm X 2.0mm	3.08
50mm X 50mm X 3.0mm	4.65
60mm X 60mm X 3.0mm	5.44
80mm X 80mm X 3.0mm	7.36
100mm X 100mm X 3.0mm	9.53
100mm X 100mm X 4.0mm	12.40

Stainless Steel Welded Structural & Decorative Tube Grade 1.4016 (316) - Dull Polish O/D

Size	KG/Metre
25mm X 25mm X 1.2mm	0.93
30mm X 30mm X 1.2mm	1.11
30mm X 30mm X 1.5mm	1.37
40mm X 40mm X 1.5mm	1.86

Stainless Steel Welded Structural & Decorative Tube to EN/ISO 1127 Grade 1.4509 (441) - Dull Polish O/D

Size	KG/Metre
25mm X 25mm X 1.2mm	0.93
30mm X 30mm X 1.2mm	1.11
30mm X 30mm X 1.5mm	1.37
40mm X 40mm X 1.5mm	1.86

Stainless Steel Welded Structural & Decorative Tube Grade 1.4301 (304) - Brushed Finish O/D

Size	KG/Metre
20mm X 20mm X 1.5mm	0.88



Structural & Decorative Tube - Rectangular

Stainless Steel Welded Structural & Decorative Tube Grade 304 - Dull Polish O/D

Size	KG/Metre
20mm X 10mm X 1.5mm	0.66
30mm X 10mm X 1.2mm	0.73
30mm X 10mm X 1.5mm	0.90
30mm X 15mm X 1.5mm	1.00
30mm X 20mm X 1.5mm	1.15
40mm X 15mm X 1.5mm	1.26
40mm X 20mm X 1.2mm	1.11
40mm X 20mm X 1.5mm	1.37
40mm X 20mm X 2.0mm	1.84
50mm X 25mm X 1.2mm	1.42
50mm X 25mm X 1.5mm	1.76
50mm X 25mm X 2.0mm	2.32
50mm X 25mm X 3.0mm	3.46
50mm X 30mm X 1.5mm	1.86
50mm X 30mm X 2.0mm	2.45
50mm X 30mm X 3.0mm	3.76
60mm X 20mm X 1.5mm	1.86
60mm X 30mm X 1.5mm	2.12
60mm X 30mm X 2.0mm	2.80
60mm X 30mm X 3.0mm	4.13
60mm X 40mm X 1.5mm	2.33
60mm X 40mm X 2.0mm	3.08
60mm X 40mm X 3.0mm	4.65
80mm X 40mm X 1.5mm	2.80
80mm X 40mm X 2.0mm	3.71
80mm X 40mm X 3.0mm	5.49
80mm X 60mm X 3.0mm	6.53
100mm X 50mm X 2.0mm	4.68
100mm X 40mm X 3.0mm	6.53
100mm X 50mm X 3.0mm	6.95
100mm X 60mm X 3.0mm	7.53
120mm X 60mm X 3.0mm	8.39

Stainless Steel Welded Structural & Decorative Tube Grade 316 - Dull Polish O/D

Size	KG/Metre
40mm X 20mm X 1.5mm	1.37
50mm X 25mm X 1.5mm	1.76
60mm X 40mm X 2.0mm	3.06
80mm X 40mm X 2.0mm	3.71
80mm X 40mm X 3.0mm	5.49
100mm X 50mm X 2.0mm	4.68
100mm X 50mm X 3.0mm	6.95

Stainless Steel Welded Structural & Decorative Tube Grade 304 - Descaled Finish

Size	KG/Metre
80mm X 40mm X 4.0mm	7.22
80mm X 40mm X 5.0mm	8.90
100mm X 50mm X 4.0mm	9.09
100mm X 50mm X 5.0mm	11.2
120mm X 60mm X 3.0mm	8.39
120mm X 60mm X 4.0mm	11.1
120mm X 60mm X 5.0mm	13.8
120mm X 80mm X 3.0mm	9.53
120mm X 80mm X 4.0mm	12.4
120mm X 80mm X 5.0mm	15.4
150mm X 50mm X 3.0mm	9.53
150mm X 50mm X 5.0mm	15.4
150mm X 100mm X 3.0mm	11.7
150mm X 100mm X 4.0mm	15.4
150mm X 100mm X 5.0mm	18.8
150mm X 100mm X 6.0mm	22.6
150mm X 100mm X 8.0mm	27.9
200mm X 100mm X 3.0mm	14.1
200mm X 100mm X 4.0mm	18.6
200mm X 100mm X 5.0mm	22.4
200mm X 100mm X 6.0mm	27.4
200mm X 100mm X 8.0mm	35.9
200mm X 100mm X 10.0mm	41.6
250mm X 150mm X 6.0mm	36.8
250mm X 150mm X 8.0mm	47.3

Stainless Steel Welded Structural & Decorative Tube Grade 316 - Descaled finish

Size	KG/Metre
80mm X 40mm X 4.0mm	7.2
80mm X 40mm X 5.0mm	8.9
100mm X 50mm X 5.0mm	11.1
120mm X 80mm X 3.0mm	9.5
120mm X 80mm X 5.0mm	15.4
150mm X 100mm X 3.0mm	11.7
150mm X 100mm X 4.0mm	15.4
150mm X 100mm X 5.0mm	19.1
150mm X 100mm X 6.0mm	22.6
150mm X 100mm X 8.0mm	29.8
200mm X 100mm X 4.0mm	18.6
200mm X 100mm X 5.0mm	23.1
200mm X 100mm X 6.0mm	27.5
200mm X 100mm X 8.0mm	34.3



Pipe

SEAMLESS TO ASTM A312 / ANSI B36.19

Size	304L	316L
1/8" SCH10S		0.28
1/8" SCH40S		0.37
1/4" SCH10S		0.50
1/4" SCH40S	0.64	0.64
1/4" SCH80S	0.81	0.81
3/8" SCH10S	0.64	0.64
3/8" SCH40S	0.86	0.86
3/8" SCH80S		1.12
1/2" SCH10S	1.02	1.02
1/2" SCH40S	1.29	1.29
1/2" SCH80S	1.65	1.65
3/4" SCH10S		1.30
3/4" SCH40S	1.72	1.72
3/4" SCH80S	2.24	2.24
1" SCH10S	2.13	2.13
1" SCH40S	2.55	2.55
1" SCH80S	3.30	3.30
1 1/4" SCH40S	3.45	
1 1/4" SCH80S	4.55	4.55
1 1/2" SCH5S	1.93	
1 1/2" SCH10S	3.16	3.16
1 1/2" SCH40S	4.12	4.12
1 1/2" SCH80S	5.51	5.51
2" SCH10S	4.00	4.00
2" SCH40S	5.54	5.54
2" SCH80S	7.62	7.62
2 1/2" SCH10S	5.36	5.36
2 1/2" SCH40S	8.79	8.79
2 1/2" SCH80S		11.60
3" SCH10S	6.57	6.57
3" SCH40S	11.50	11.50
3" SCH80S	15.60	15.60
4" SCH10S	8.52	8.52
4" SCH40S	16.40	16.40
4" SCH80S	22.70	22.70
5" SCH40S		22.20
6" SCH10S	14.10	
6" SCH40S	28.80	
6" SCH80S	43.40	43.40
8" SCH10S		20.30
8" SCH40S	43.30	43.30

SEAMLESS TO ASTM A312 / ANSI B36.10 Grade 316L

Size	KG/Metre
1/2" SCH160	1.99
3/4" SCH160	2.95
1" SCH160	4.32
1 1/2" SCH160	7.37
2" SCH160	11.30
3" SCH160	21.70
6" SCH10S	14.10
6" SCH40S	28.80
8" SCH80S	65.90

WELDED TO ASTM A312 / ANSI B36.19

Size	304L	316L
1/2" SCH5S	0.82	0.82
1/2" SCH10S	1.02	1.02
1/2" SCH40S	1.29	1.29
3/4" SCH5S	1.04	1.04
3/4" SCH10S	1.30	1.30
3/4" SCH40S	1.72	1.72
1" SCH5S	1.32	1.32
1" SCH10S	2.13	2.13
1" SCH40S	2.55	2.55
1 1/4" SCH5S	1.68	
1 1/4" SCH10S	2.74	2.74
1 1/4" SCH40S	3.45	3.45
1 1/2" SCH5S		1.93
1 1/2" SCH10S	3.16	3.16
1 1/2" SCH40S	4.11	4.11
2" SCH5S	2.43	2.43
2" SCH10S	4.00	4.00
2" SCH40S	5.54	5.54
2 1/2" SCH5S	3.76	3.76
2 1/2" SCH10S	5.36	5.36
2 1/2" SCH40S	8.79	8.79
3" SCH5S	4.60	4.60
3" SCH10S	6.57	6.57
3" SCH40S	11.50	11.50
3 1/2" SCH10S	7.55	7.55
3 1/2" SCH40S	13.80	13.80
4" SCH5S	5.94	5.94
4" SCH10S	8.52	8.52
4" SCH40S	16.40	16.40
5" SCH10S	11.80	11.80
5" SCH40S	22.20	22.20
6" SCH5S	11.50	11.50
6" SCH10S	14.10	14.10
6" SCH40S	28.80	28.80
8" SCH5S	15.10	15.10
8" SCH10S	20.30	20.30
8" SCH40S	43.30	43.30
10" SCH5S		23.10
10" SCH10S	28.30	28.30
10" SCH40S	61.40	61.40
12" SCH5S		31.90
12" SCH10S	36.70	36.70
12" SCH40S	75.20	75.20
14" SCH10S	42.10	42.10
16" SCH10S	48.20	48.20
18" SCH10S	54.30	54.30
20" SCH10S	69.90	69.90
24" SCH10S	96.20	96.20



Butt Weld Fittings

Stainless Steel Equal Tees - Seamless

Size	304L	316L
½" SCH10S EQUAL TEE		0.06
½" SCH40S EQUAL TEE	0.07	0.07
1" SCH10S EQUAL TEE	0.18	0.18
1" SCH40S EQUAL TEE	0.21	0.21
1½" SCH10S EQUAL TEE	0.40	0.40
1½" SCH40S EQUAL TEE		0.52
2" SCH10S EQUAL TEE	0.56	0.56
2" SCH40S EQUAL TEE	0.77	0.77
3" SCH10S EQUAL TEE		1.24
3" SCH40S EQUAL TEE		2.17
4" SCH10S EQUAL TEE	1.96	1.96
4" SCH80S EQUAL TEE		5.24
6" SCH10S EQUAL TEE	4.43	4.43

Stainless Steel Reducing Tees - Seamless

Size	304L	316L
1"-½" SCH10S RED TEE	0.18	0.18
1½"-1" SCH40S RED TEE		0.52
2"-1" SCH10S RED TEE		0.56
2"-1" SCH40S RED TEE		0.77
1½"-½" SCH10S RED TEE		0.65
1½"-¾" SCH10S RED TEE		0.14
3"-2" SCH10S RED TEE		1.24
4"-2" SCH10S RED TEE	1.96	



Stainless Steel End Caps - Seamless

Size	304L	316L
½" SCH10S END CAP		0.03
1" SCH10S END CAP	0.07	0.07
1" SCH40S END CAP		0.10
1¼" SCH10S END CAP		0.10
1½" SCH10S END CAP	0.13	0.13
2" SCH10S END CAP	0.19	0.19
2½" SCH40S END CAP	0.37	
3" SCH10S END CAP	0.38	0.38
3" SCH40S END CAP		0.64
4" SCH10S END CAP	0.57	0.57
6" SCH10S END CAP		1.41
8" SCH40S END CAP		5.08
12" SCH10S END CAP		6.68



Stainless Steel Long Radius Elbows - 90 Degree - Seamless

Size	304L	316L
½" SCH10S 90 LR ELBOW	0.06	0.06
½" SCH40S 90 LR ELBOW	0.08	0.08
½" SCH80S 90 LR ELBOW		0.10
¾" SCH10S 90 LR ELBOW	0.06	0.06
¾" SCH40S 90 LR ELBOW		0.08
¾" SCH80S 90 LR ELBOW		0.10
1" SCH10S 90 LR ELBOW	0.13	0.13
1" SCH40S 90 LR ELBOW	0.15	0.15
1" SCH80S 90 LR ELBOW		0.20
1½" SCH10S 90 LR ELBOW	0.28	0.28
1½" SCH40S 90 LR ELBOW	0.37	0.37
1½" SCH80S 90 LR ELBOW		0.49
2" SCH10S 90 LR ELBOW	0.48	0.48
2" SCH40S 90 LR ELBOW	0.66	0.66
2" SCH80S 90 LR ELBOW		0.91
2½" SCH10S 90 LR ELBOW	0.80	0.80
3" SCH10S 90 LR ELBOW	1.18	1.18
3" SCH40S 90 LR ELBOW	2.07	2.07
4" SCH10S 90 LR ELBOW	2.04	2.04
4" SCH40S 90 LR ELBOW	3.92	3.92
6" SCH10S 90 LR ELBOW	5.06	5.06
6" SCH40S 90 LR ELBOW		10.35
8" SCH10S 90 LR ELBOW	9.74	

Stainless Steel Long Radius 45 Degree Elbows - Seamless

Size	304L	316L
½" SCH40S 45 LR ELBOW		0.04
1" SCH10S 45 LR ELBOW		0.06
1½" SCH10S 45 LR ELBOW		0.14
1½" SCH40S 45 LR ELBOW		0.18
2" SCH10S 45 LR ELBOW		0.24
2" SCH40S 45 LR ELBOW		0.33

Stainless Steel Short Radius Elbows - 90 Degree - Seamless (ANSI B16.28)

Size	304L	316L
1½" SCH40S 90 SR ELBOW		0.25
2" SCH10S 90 SR ELBOW		0.32
2" SCH40S 90 SR ELBOW		0.44
3" SCH10S 90 SR ELBOW		0.79
3" SCH40S 90 SR ELBOW		1.38
4" SCH10S 90 SR ELBOW		1.36
4" SCH40S 90 SR ELBOW		
6" SCH10S 90 SR ELBOW		5.45



Stainless Steel Concentric Reducers - Seamless

Size	304L	316L
1"-½" 40S CON-RED		0.13
1"-½" 10S CON-RED		0.11
1½"-1" 10S CON-RED	0.20	0.20
1½"-1" 40S CON-RED		0.26
1½"-1¼" 40S CON-RED		0.26
2"-1" 10S CON-RED	0.30	0.30
2"-1" 40S CON-RED	0.42	0.42
2"-1½" 10S CON-RED		0.30
2"-1½" 40S CON-RED		0.42
3"-1½" 40S CON-RED		1.02
3"-2" 10S CON-RED		0.58
3"-2" 40S CON-RED		1.02
4"-2" 10S CON-RED	0.87	0.87
4"-2" 40S CON-RED		1.66
4"-3" 10S CON-RED	0.87	0.87
6"-3" 10S CON-RED		1.97
6"-4" 10S CON-RED		1.97

Stainless Steel Eccentric Reducers - Seamless

Size	304L	316L
1¼"-1" 10S ECC-RED		0.18
4"-3" 10S ECC-RED		0.87



Stainless Steel Stub Ends Type A MSS SP43 Seamless

Size	304L	316L
1" 10S STUB TYPE A		0.14
1½" 10S STUB TYPE A		0.25
2" 10S STUB TYPE A	0.38	0.38
3" 10S STUB TYPE A		0.64
4" 10S STUB TYPE A		0.98
6" 10S STUB TYPE A		1.95

Stainless Steel



Butt Weld Fittings

Stainless Steel Equal Tees - Welded

Size	304L	316L
½" SCH10S EQUAL TEE	0.06	0.06
¾" SCH10S EQUAL TEE	0.08	0.08
1" SCH10S EQUAL TEE	0.18	0.18
1" SCH40S EQUAL TEE	0.21	0.21
1½" SCH10S EQUAL TEE	0.40	0.40
1½" SCH40S EQUAL TEE	0.52	0.52
2" SCH10S EQUAL TEE	0.56	0.56
2" SCH40S EQUAL TEE	0.77	0.77
3" SCH10S EQUAL TEE	1.24	1.24
4" SCH10S EQUAL TEE	1.96	1.96
6" SCH10S EQUAL TEE		4.43

Stainless Steel Reducing Tees - Welded

Size	304L	316L
1"-½" SCH10S RED TEE		0.18
1½"-1" SCH10S RED TEE	0.40	0.40
2"-1" SCH10S RED TEE	0.56	0.56
2"-1½" SCH10S RED TEE	0.56	
3"-1½" SCH10S RED TEE	1.24	
3"-2" SCH10S RED TEE	1.24	1.24



Stainless Steel Long Radius 90 Degree Elbows - Welded

Size	304L	316L
½" SCH10S 90 LR ELBOW	0.06	0.06
½" SCH40S 90 LR ELBOW	0.08	0.08
¾" SCH10S 90 LR ELBOW	0.06	0.06
¾" SCH40S 90 LR ELBOW	0.08	0.08
1" SCH10S 90 LR ELBOW	0.13	0.13
1" SCH40S 90 LR ELBOW	0.15	0.15
1¼" SCH10S 90 LR ELBOW	0.21	0.21
1¼" SCH40S 90 LR ELBOW	0.26	
1½" SCH10S 90 LR ELBOW	0.28	0.28
1½" SCH40S 90 LR ELBOW		0.37
2" SCH10S 90 LR ELBOW	0.48	0.48
2" SCH40S 90 LR ELBOW	0.66	0.66
2½" SCH10S 90 LR ELBOW	0.80	0.80
3" SCH10S 90 LR ELBOW	1.18	1.18
3" SCH40S 90 LR ELBOW	2.07	2.07
4" SCH10S 90 LR ELBOW	2.04	2.04
4" SCH40S 90 LR ELBOW	3.92	3.92
6" SCH10S 90 LR ELBOW	5.06	5.06
6" SCH40S 90 LR ELBOW	10.35	10.35
8" SCH10S 90 LR ELBOW	9.74	9.74
8" SCH40S 90 LR ELBOW		20.76
10" SCH10S 90 LR ELBOW	16.95	16.95
12" SCH10S 90 LR ELBOW	26.35	26.35
12" SCH40S 90 LR ELBOW		54.04
14" SCH10S 90 LR ELBOW		35.28
16" SCH10S 90 LR ELBOW		46.10
20" SCH10S 90 LR ELBOW		83.70

Stainless Steel Long Radius 45 Degree Elbows - Welded

Size	304L	316L
¾" SCH40S 45 LR ELBOW	0.03	0.04
1" SCH10S 45 LR ELBOW		0.60
1" SCH40S 45 LR ELBOW		0.08
1½" SCH10S 45 LR ELBOW	0.14	0.14
1½" SCH40S 45 LR ELBOW		0.18
2" SCH10S 45 LR ELBOW	0.24	0.24
3" SCH10S 45 LR ELBOW	0.59	0.59
4" SCH10S 45 LR ELBOW	1.02	1.02
6" SCH10S 45 LR ELBOW	2.53	2.53
8" SCH10S 45 LR ELBOW		4.87
10" SCH10S 45 LR ELBOW		8.47



Stainless Steel Concentric Reducers - Welded

Size	304L	316L
1"-½" 10S CON-RED	0.11	0.11
1"-½" 40S CON-RED		0.13
1"-¾" 10S CON-RED		0.11
1½"-1" 10S CON-RED	0.20	0.20
1½"-1" 40S CON-RED		0.26
2"-1" 10S CON-RED	0.30	0.30
2"-1½" 10S CON-RED	0.30	0.30
2"-1½" 40S CON-RED	0.42	0.42
2½"-2" 10S CON-RED		0.48
3"-1½" 10S CON-RED	0.58	0.58
3"-2" 10S CON-RED	0.58	0.58
3"-2" 40S CON-RED		1.02
3"-2½" 10S CON-RED		0.58
4"-2" 10S CON-RED	0.87	0.87
4"-3" 10S CON-RED	0.87	0.87
6"-3" 10S CON-RED	1.97	
6"-4" 10S CON-RED	1.97	1.97
8"-4" 10S CON-RED		3.10
8"-6" 10S CON-RED		3.10

Stainless Steel Eccentric Reducers - Welded

Size	304L	316L
1½"-1" 10S ECC-RED		0.20
1½"-1" 40S ECC-RED		0.26
2½"-2" 10S ECC-RED		0.48
3"-1½" 10S ECC-RED		0.58
3"-2" 10S ECC-RED	0.58	
4"-2" 10S ECC-RED		0.87
4"-3" 10S ECC-RED		0.87



Stainless Steel Stub Ends Type A MSS SP43 Welded

Size	304L	316L
½" 10S STUB TYPE A		0.08
1" 10S STUB TYPE A	0.14	0.14
1½" 10S STUB TYPE A	0.25	0.25
2" 10S STUB TYPE A	0.38	0.38
2½" 10S STUB TYPE A		0.47
3" 10S STUB TYPE A		0.64
4" 10S STUB TYPE A		0.98
6" 10S STUB TYPE A		1.95
8" 10S STUB TYPE A		3.11



Flanges

Stainless Steel Raised Face Blind Flanges ASTM A182/ANSI B16.5 150lb Grades 304L & 316L

Size	KG/Metre
½" 150lb RF BLIND	0.42
¾" 150lb RF BLIND	0.61
1" 150lb RF BLIND	0.86
1½" 150lb RF BLIND	1.53
2" 150lb RF BLIND	2.42
2½" 150lb RF BLIND	3.94
3" 150lb RF BLIND	4.93
4" 150lb RF BLIND	7.00
6" 150lb RF BLIND	11.3
8" 150lb RF BLIND	19.6
10" 150lb RF BLIND	28.8
12" 150lb RF BLIND	43.2

Stainless Steel Raised Face Blind Flanges ASTM A182/ANSI B16.5 300lb Grade 316

Size	KG/Metre
¾" 300lb RF BLIND	1.11
1" 300lb RF BLIND	1.39
2" 300lb RF BLIND	3.18
3" 300lb RF BLIND	6.81
4" 300lb RF BLIND	11.50

Stainless Steel Raised Face Slip On Flanges ASTM A182/ANSI B16.5 150lb Grades 304L & 316L

Size	KG/Metre
½" 150lb RF SLIP ON	0.39
¾" 150lb RF SLIP ON	0.56
1" 150lb RF SLIP ON	0.78
1¼" 150lb RF SLIP ON	1.03
1½" 150lb RF SLIP ON	1.32
2" 150lb RF SLIP ON	2.06
2½" 150lb RF SLIP ON	3.28
3" 150lb RF SLIP ON	3.85
4" 150lb RF SLIP ON	5.30
5" 150lb RF SLIP ON	6.01
6" 150lb RF SLIP ON	7.45
8" 150lb RF SLIP ON	12.1
10" 150lb RF SLIP ON	16.5
12" 150lb RF SLIP ON	26.2
14" 150lb RF SLIP ON	34.6
16" 150lb RF SLIP ON	44.8

Stainless Steel Raised Face Slip On Flanges ASTM A182/ANSI B16.5 300lb Grade 316

Size	KG/Metre
1" 300lb RF SLIP ON	1.36
1½" 300lb RF SLIP ON	2.49
2" 300lb RF SLIP ON	2.87
3" 300lb RF SLIP ON	5.85
4" 300lb RF SLIP ON	9.61

Stainless Steel Raised Face Weld Neck Flanges ASTM A182/ANSI B16.5 150lb Grades 304L & 316L

Size	KG/Metre
½" 150lb RFWN SCH10S	0.48
½" 150lb RFWN SCH40S	0.48
¾" 150lb RFWN SCH40S	0.71
1" 150lb RFWN SCH10S	1.01
1" 150lb RFWN SCH40S	1.01
1½" 150lb RFWN SCH10S	1.72
1½" 150lb RFWN SCH40S	1.72
2" 150lb RFWN SCH10S	2.58
2" 150lb RFWN SCH40S	2.58
2½" 150lb RFWN SCH10S	4.11
2½" 150lb RFWN SCH40S	4.11
3" 150lb RFWN SCH10S	4.92
3" 150lb RFWN SCH40S	4.92
4" 150lb RFWN SCH10S	6.84
4" 150lb RFWN SCH40S	6.84
6" 150lb RFWN SCH10S	10.6
6" 150lb RFWN SCH40S	10.6
8" 150lb RFWN SCH10S	17.6
10" 150lb RFWN SCH10S	24.0
12" 150lb RFWN SCH10S	24.0

Stainless Steel Raised Face Weld Neck Flanges ASTM A182/ANSI B16.5 300lb Grade 316

Size	KG/Metre
¾" 300lb RFWN SCH40S	1.26
1" 300lb RFWN SCH10S	1.52
1" 300lb RFWN SCH40S	1.52
2" 300lb RFWN SCH10S	3.40
2" 300lb RFWN SCH40S	3.40
3" 300lb RFWN SCH10S	4.92
3" 300lb RFWN SCH40S	6.93
4" 300lb RFWN SCH40S	11.20

Stainless Steel Plate Flanges BS10 Table E - Blind Grade 316L

Size	KG/Metre
1" NB TABLE E BLIND	0.52
1½" TABLE E BLIND	0.88
2" TABLE E BLIND	1.26
3" TABLE E BLIND	2.23
4" TABLE E BLIND	3.45
6" TABLE E BLIND	5.14

Stainless Steel Plate Flanges BS10 Table E - Slip On Grade 316L

Size	KG/Metre
½" TABLE E SLIP ON	0.30
¾" TABLE E SLIP ON	0.33
1" TABLE E SLIP ON	0.47
1½" TABLE E SLIP ON	0.75
2" TABLE E SLIP ON	1.03
3" TABLE E SLIP ON	1.65
4" TABLE E SLIP ON	2.40
6" TABLE E SLIP ON	5.14
8" TABLE E SLIP ON	7.50

Stainless Steel BS4504/BSEN 1092 Flanges PN16/105 Raised Face Blind Grades 304L & 316L

Size	KG/Metre
1" PN 16/105 RF BLIND	1.30
1½" PN 16/105 RF BLIND	2.30
2" PN 16/105 RF BLIND	3.00
3" PN 16/105 RF BLIND	5.10
4" PN 16/105 RF BLIND	6.00
6" PN 16/105 RF BLIND	11.10

Stainless Steel BS4504/BSEN 1092 Flanges PN16/101 Raised Face Slip On Grades 304L & 316L

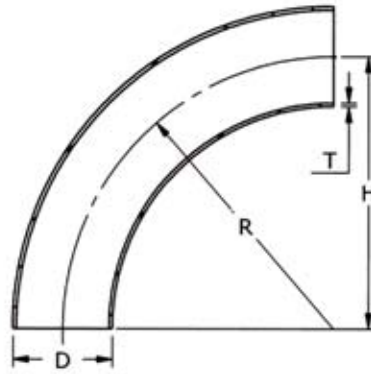
Size	KG/Metre
½" PN 16/101 RF S.O.	0.75
¾" PN 16/101 RF S.O.	0.90
1" PN 16/101 RF S.O.	1.10
1¼" PN 16/101 RF S.O.	1.70
1½" PN 16/101 RF S.O.	2.00
2" PN 16/101 RF S.O.	2.60
2½" PN 16/101 RF S.O.	3.20
3" PN 16/101 RF S.O.	4.10
4" PN 16/101 RF S.O.	4.40
6" PN 16/101 RF S.O.	7.20
8" PN 16/101 RF S.O.	9.90
10" PN 16/101 RF S.O.	14.30



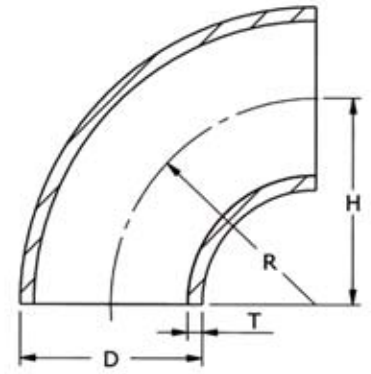
Metric Tube and Fittings

Stainless Steel Metric Welded Tube EN10217-7-2006 TC1 Grades 304L & 316L

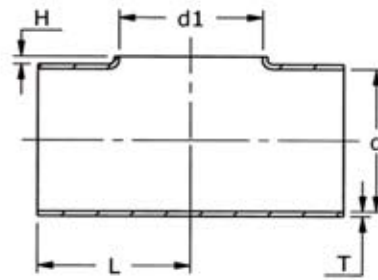
Size	KG/Metre
28mm O/D X 1.5MM WALL	0.99
38MM O/D X 1.5MM WALL	1.37
43MM O/D X 1.5MM WALL	1.56
44.5MM O/D X 2.0MM WALL	2.13
53MM O/D X 1.5MM WALL	1.93
54MM O/D X 2.0MM WALL	2.40
83MM O/D X 1.5MM WALL	3.06
84MM O/D X 2.0MM WALL	3.90
103MM O/D X 1.5MM WALL	3.81
104MM O/D X 2.0MM WALL	5.12
129 MM O/D X 2.0MM WALL	6.35
153MM O/D X 1.5MM WALL	5.68
154MM O/D X 2.0MM WALL	7.60
204MM O/D X 2.0MM WALL	10.1
254MM O/D X 2.0MM WALL	15.8
304MM O/D X 2.0MM WALL	15.1



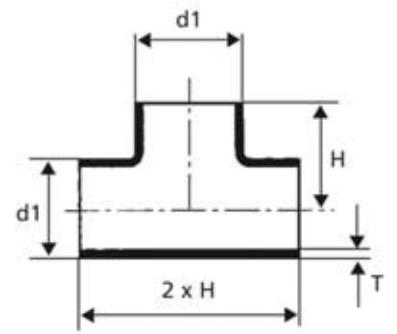
Welded 45° & 90° elbows (radius $D+100$)



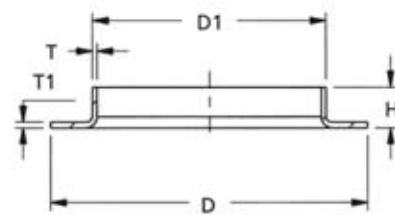
Welded 45° & 90° elbows (radius $1.5D$)



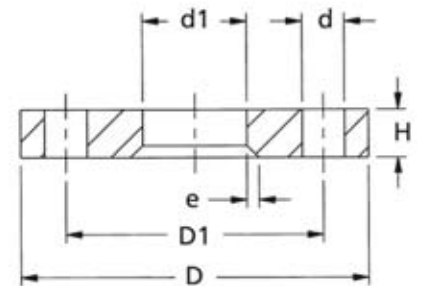
Pulled equal and reducing tees



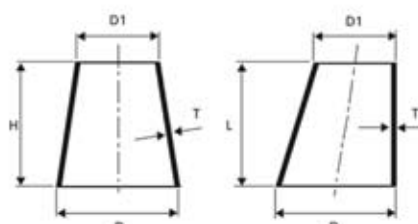
Equal tees with branch



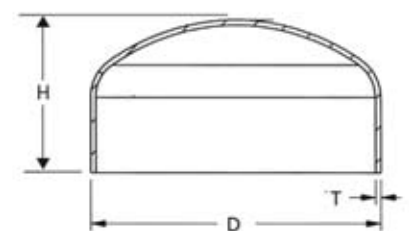
Pressed collars



Flanges



Concentric and eccentric reducers



Pressed end caps





Seamless Tube

Seamless Stainless Steel Tube ASTM A269/ A213 Grade 316

Size	KG/Metre
1/8" OD X 0.022" (24swg)	0.04
1/8" OD X 0.028" (22swg)	0.04
1/8" OD X 0.036" (20swg)	0.05
3/16" OD X 0.022" (24swg)	0.06
3/16" OD X 0.028" (22swg)	0.07
3/16" OD X 0.036" (20swg)	0.09
3/16" OD X 0.048" (18swg)	0.11
1/4" OD X 0.028" (22swg)	0.10
1/4" OD X 0.036" (20swg)	0.12
1/4" OD X 0.048" (18swg)	0.16
1/4" OD X 0.064" (16swg)	0.19
5/16" OD X 0.028" (22swg)	0.13
5/16" OD X 0.036" (20swg)	0.16
5/16" OD X 0.064" (16swg)	0.26
3/8" OD X 0.028" (22swg)	0.16
3/8" OD X 0.036" (20swg)	0.20
3/8" OD X 0.048" (18swg)	0.25
3/8" OD X 0.064" (16swg)	0.32
3/8" OD X 0.080" (14swg)	0.38
1/2" OD X 0.028" (22swg)	0.21
1/2" OD X 0.036" (20swg)	0.26
1/2" OD X 0.048" (18swg)	0.35
1/2" OD X 0.064" (16swg)	0.45
1/2" OD X 0.080" (14swg)	0.54
1/2" OD X 0.125"	0.76
5/8" OD X 0.036" (20swg)	0.34
5/8" OD X 0.048" (18swg)	0.45
5/8" OD X 0.064" (16swg)	0.58
5/8" OD X 0.080" (14swg)	0.70
5/8" OD X 0.125"	1.01
3/4" OD X 0.036" (20swg)	0.41
3/4" OD X 0.048" (18swg)	0.54
3/4" OD X 0.064" (16swg)	0.71
3/4" OD X 0.080" (14swg)	0.86
3/4" OD X 0.104" (12swg)	1.08
3/4" OD X 0.128" (10swg)	1.26
7/8" OD X 0.064" (16swg)	0.84
1" OD X 0.036" (20swg)	0.56
1" OD X 0.048" (18swg)	0.74
1" OD X 0.064" (16swg)	0.97
1" OD X 0.080" (14swg)	1.19
1" OD X 0.104" (12swg)	1.50
1" OD X 0.128" (10swg)	1.77
1 1/4" OD X 0.064" (16swg)	1.20
1 1/4" OD X 0.080" (14swg)	1.50
1 1/4" OD X 0.125"	2.30
1 1/2" OD X 0.064" (16swg)	1.50
1 1/2" OD X 0.125"	2.80
2" OD X 0.125"	3.79

continued...

Size	KG/Metre
2" OD X 0.250"	7.06
2 1/2" OD X 0.25"	9.10
3" OD X 0.064" (16swg)	3.00
3" OD X 0.128" (10swg)	5.90
3" OD X 0.250"	11.09

Seamless Stainless Steel Tube ASTM A269/ A213 Grade 316

Size	KG/Metre
6.0mm OD X 0.50mm	0.07
6.0mm OD X 1.0mm	0.13
6.0mm OD X 1.5mm	0.17
8.0mm OD X 1.0mm	0.18
8.0mm OD X 1.5mm	0.24
10.0mm OD X 1.0mm	0.23
10.0mm OD X 1.5mm	0.32
10.0mm OD X 2.0mm	0.40
12.0mm OD X 1.0mm	0.30
12.0mm OD X 1.5mm	0.39
12.0mm OD X 2.0mm	0.50
15.0mm OD X 1.5mm	0.50
16.0mm OD X 1.5mm	0.54
16.0mm OD X 2.0mm	0.70
18.0mm OD X 1.5mm	0.61
20.0mm OD X 1.5mm	0.69
20.0mm OD X 2.0mm	0.90
22.0mm OD X 1.5mm	0.77
25.0mm OD X 1.5mm	0.90
25.0mm OD X 2.0mm	1.20
25.0mm OD X 2.5mm	1.40
25.0mm OD X 3.0mm	1.70

Seamless Stainless Steel Tube ASTM A269/ A213 Grade 304

Size	KG/Metre
1/4" OD X 0.036" (20swg)	0.12
5/8" OD X 0.036" (20swg)	0.34
1/2" OD X 0.048" (18swg)	0.35
3/4" OD X 0.036" (20swg)	0.41
5/8" OD X 0.048" (18swg)	0.44
5/8" OD X 0.064" (16swg)	0.58
3/4" OD X 0.064" (16swg)	0.70
1" OD X 0.048" (18swg)	0.73

Seamless Stainless Steel Tube ASTM A269/ A213 Grade 304

Size	KG/Metre
6.0mm OD X 1.0mm	0.12
10.0mm OD X 1.0mm	0.22
12.0mm OD X 1.0mm	0.30
15.0mm OD X 1.5mm	0.50

Hygienic Tube and Fittings

Stainless Steel Hygienic Tube to ASTM A270
 Grades 304L & 316L. Available in Bright
 Annealed or with Satin Polished O/D

Size	KG/Metre
¾" O/D X 16SWG	0.72
1" O/D X 16SWG	0.97
1½" O/D X 16SWG	1.45
2" O/D X 16SWG	1.99
2½" O/D X 16SWG	2.51
3" O/D X 16SWG	3.02
4" O/D X 16SWG	4.04
4" O/D X 14SWG	5.02

Stainless Steel Hygienic Tube to DIN 11850 -
 UN-ANNEALED - Grade 316L. Available
 Descaled or with Satin Polished O/D

Size	KG/Metre
1" OD X 1.5mm	0.9
1½"OD X 1.5mm	1.37
2" OD X 1.5mm	1.85
2½"OD X 1.5mm	2.33
3" OD X 1.5mm	2.8
4" OD X 1.5mm	3.75
4" OD X 2.0mm	4.98
4" O/D X 14SWG	5.02

Stainless Steel Hygienic Tube to DIN 11850 -
 UN-ANNEALED - Grade 304. Available Descaled
 or with Satin Polished O/Dt

Size	KG/Metre
1" OD X 1.5mm	0.9
1½" OD x 1.5mm	1.37
2" OD X 1.5mm	1.85



Clamp Fittings



Hygienic Bends



Pulled Tees



RJT Unions



Full Tees



IDF Unions



Reducing Tees



Hinged Pipe Clip



Concentric and Eccentric Reducers

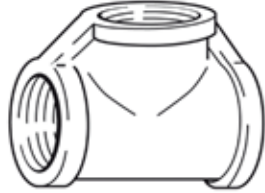


BSP Fittings

Sizes: 1/8", 1/4", 3/8", 1/2", 3/4", 1", 1 1/2", 2", 3"



90° Elbow



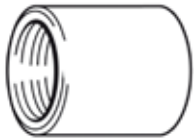
Equal Tee



Union



45° Elbow



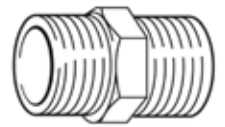
Socket



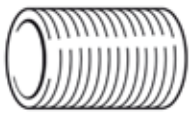
Round Nut



Reducing Socket



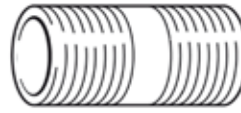
Hexagon Nipple



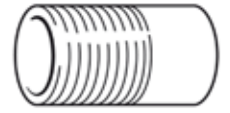
Equal Nipple



Cap



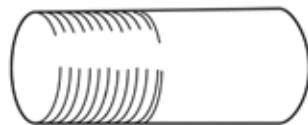
Barrel Nipple



Welding Nipple



Hexagon Head Plug



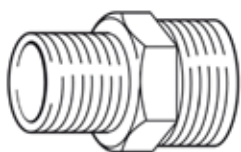
Hose Connector



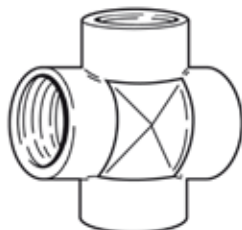
Reducing Bush



Hexagon Nut



Reducing Nipple



Cross



Half Socket



Square Head Plug

Handrail Tube and fittings

Stainless Steel Handrail Tube Grade 304 & 316 -
Satin Polish O/D

Size	KG/Metre
1" OD X 3.0mm	1.68
2" OD X 3.0mm	3.57
3" OD X 3.0mm	5.46
4" OD X 3.0mm	7.40
42.4mm OD X 2.0mm	2.01
48.3mm OD x 2.0mm	2.32
60.3mm OD X 2.0mm	2.92
42.4mm OD X 2.5mm	2.49
48.3mm OD X 2.5mm	2.86
60.3mm OD X 2.5mm	3.61

Stainless Steel UN-ANNEALED Handrail Tube
Grade 304 - Descaled Finish

Size	KG/Metre
42.2mm OD X 1.6mm 304	1.62
60.3mm OD X 1.6mm 304	2.33
76.1mm OD X 1.6mm 304	2.96
101.6mm OD X 2.0mm 304	4.94



Glass Clamps



Glass Clamp



Glass Clamp



Glass Clamp



Glass Clamp

Fittings



Adjustable Elbow



90 Degree Elbow



45 Degree Elbow



90 Degree Curved Elbow

Fittings



Flexible Elbow



Internal Connector



Crossbar Holder Intermediate



Flush Tee Connector

Fittings



4-way Corner Connector



Cross Connector



3-way Corner Connector



Adaptor

Mountings



Floor Base (indoor use)

Mountings



Floor Base (outdoor use)

Mountings



Elbow with Flange

End Caps



Flat Cap

Handrail Brackets



Straight Saddle

Handrail Brackets



Handrail Holder



Disc



Cover Plate



Elbow with Flange



End Caps



Adjustable Saddle



Handrail Holder



Wall Flange



Disc



End Caps with M8



Wall Support



Handrail Holder



Side Mounted Base



Side Mounted Base

End Caps



End Caps



End Caps



Wall Support

Slotted Tube System and Fittings

Stainless Steel Slotted Handrail Tube
Grades 304 & 316

Size	KG/Metre
42.2MM X 1.5MM	1.83
48.3MM X 1.5MM	2.17



Slotted tube



End caps



90 degree angle - vertical



90 degree angle - horizontal



Connector



Rubber inserts

Accessories - Adhesives & Cleaners



Stainless Steel Cleaning and Passivation Kit

The kit comprises a viscous deep cleaner that removes contamination such as oxides/rust/'tea-stains' plus a passivating agent that will also remove contamination loosened by the deep cleaner. An application sponge is also included.

Stainless Steel Glue also available...

durbin^{dm}

metal industries



Unit O, Lawrence Drive,
Stover Trading Estate
Yate, Bristol, BS37 5PG

t: 01454 322668

f: 01454 317415

mail@durbinmetals.co.uk

www.durbinmetals.co.uk

